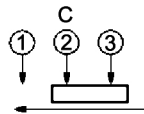


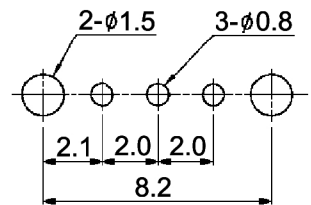
CIRCUIT DIAGRAM

C: COMMON PIN
BOTTOM VIEW



non-shorting

HOLE LAYOUT ± 0.05



Specifications:

- Contact rating: 0.1A, 12V DC
- Contact resistance: 20mOhm max.
- Insulation resistance: 100MOhm min. at 500V DC for 1 minute
- Dielectric strength: 500V AC (50/60Hz, 2mA) for 1 minute
- Operating temperature: -40°C to +85°C
- Mechanical life: 10 000 cycles
- Operating force: 200gf +/-100gf
- Material: Spring plate: PBS, washing
Contact clip: PBS, silver plated
Slider: PA46, black
Terminal: brass, silver plated
Base: phenolic resin, natural
Frame: SPCC, Sn

x	Actuator length (L)
3	3.0
(empty)	4.0
7	7.0

Compliance: RohS III (2015/863/EU)

Tolerances: up to 10: ± 0.2 mm above 10-50: ± 0.3 mm	Date	Name
	08/06	dr
Slider length	10/24	dr
Slider length	12/22	dr
Operating temperature	02/22	dr
Tolerances	05/10	dr
Modifications	Date	Name

MFP 113 D-x

knitter-switch

30 09 57

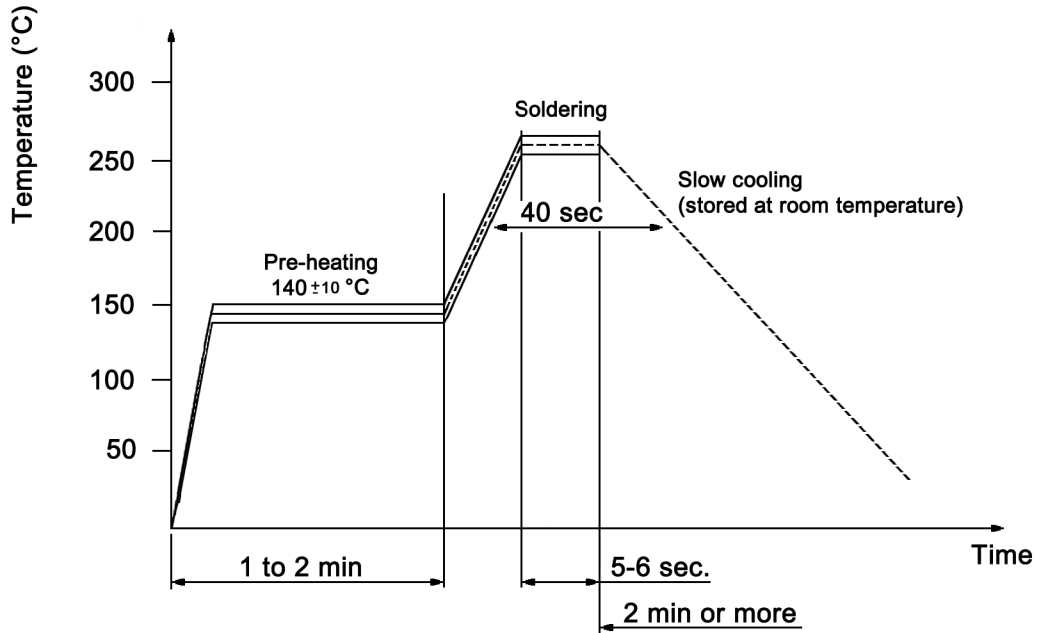
Page

1/2

Soldering conditions:

Reflow soldering method:

Peak: 260 +/-3°C, 5-6sec. / 220 +/-5°C, 40sec.



Compliance: RohS III (2015/863/EU)

Tolerances: up to 10: ±0.2mm above 10-50: ±0.3mm		Date	Name	<h1>MFP 113 D-x</h1>
		08/06	dr	
Slider length	10/24	dr		<h2>30 09 57</h2>
Slider length	12/22	dr		
Operating temperature	02/22	dr	knitter-switch	Page
Tolerances	05/10	dr		2/2
Modifications	Date	Name		